

**HR-2410GH** (AFTER SERIAL #10812035)

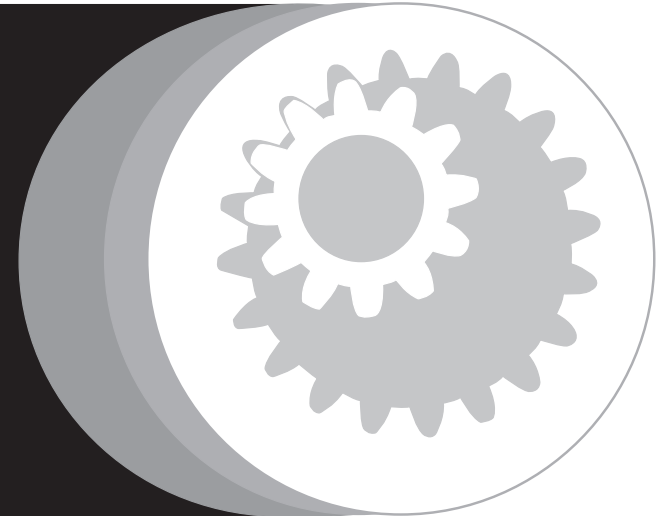
**HR-2600GM**

**Cold Water Pressure Washer**



**JOHN DEERE**

**PARTS  
CATALOG**



<b>ENGINE OIL GRADE:</b>	<b>SAE10W-30</b>
<b>ENGINE OIL CAPACITY:</b>	
HR-2410GH	20 oz.
HR-2600GM	19 oz.
<b>PUMP OIL GRADE:</b>	<b>75W90 Synthetic</b>
<b>PUMP OIL CAPACITY:</b>	<b>2.3 oz.</b>
<b>NOZZLE SIZE:</b>	
HR-2410GH	1.15 mm
HR-2600GM	2.7 mm

**1-877-JD-KLEEN (1-877-535-5336)**

This Parts Listing has been compiled for your benefit. You can be assured your John Deere Cold Water Pressure Washer was constructed and designed with quality and performance in mind. Each component has been rigorously tested to insure the highest level of acceptance.

The contents of this Parts Listing are based on the latest product information available at the time of publication. John Deere reserves the right to make changes in price, color, materials, equipment, specifications or models at any time without notice.

**WARNING**

THIS IS A PROFESSIONAL HIGH PRESSURE, COLD WATER PRESSURE WASHER. CAUTION SHOULD BE OBSERVED WHEN USING OR REPAIRING THIS UNIT! READ AND FOLLOW THE SAFETY WARNINGS LISTED BELOW BEFORE ATTEMPTING ANY REPAIRS ON THIS PRESSURE WASHER!

**SAFETY WARNINGS**

1. NEVER alter or modify the equipment. Be sure any accessory items and system components being used will withstand the pressure developed. Use only genuine manufacturer replacement parts for repair of your pressure washer. Failure to do so can cause hazardous operating conditions and will VOID warranty.
2. NEVER make adjustments on machinery while the unit is connected to the power source. Turning over the machinery by hand during adjustment or cleaning might start the machinery, causing serious injury to the operator.
3. Know how to stop and bleed pressures quickly. Be thoroughly familiar with controls.
4. Before servicing the unit, turn unit off, relieve the water pressure and allow the unit to cool down. Do not make repairs while the unit is running. Service in a clean, dry, flat area.
5. After testing the machine, DO NOT leave the pressurized unit unattended. Shut off the unit and release trapped pressure before leaving.

**Table of Contents**

<b>SPECIFICATIONS</b> .....	<b>3</b>
<b>NOTES</b> .....	<b>4</b>
<b>NOTES</b> .....	<b>5</b>
<b>HR-2410GH (AFTER SERIAL #10812035)</b> .....	<b>6</b>
<b>HR-2600GM</b> .....	<b>8</b>
<b>PUMP ASSEMBLY (3-0358)</b> .....	<b>10</b>

## SPECIFICATIONS

Model Number	HR-2410GH	HR-2600GM
Operating Pressure (PSI/Bar):	2400/166	2600/179
High Pressure Nozzle:	1.15 mm	2.7 mm
Water Volume (GPM/lpm):	2.0/7.6	2.2/8.3
Engine:	Honda	Mi-T-M
Model	GCV160	RV170
Engine Type	4 Stroke, Overhead Cam, Single Cylinder	4 Stroke, Overhead Valve, Single Cylinder
Oil Type	SAE10W-30	
Oil Capacity (oz./liters)	20/.6	19/0.55
Fuel Type	Unleaded Gasoline 86 Octane Minimum	
Fuel Capacity (gallon/ liters)	.29/1.1	
Starting	Recoil	
Maximum No Load RPM	3600 (+/- 100) RPM	3800 (+/- 100) RPM
Pump:	Direct Driven, Oil Bath, Triplex Axial Piston	
Oil Type	75W90 Synthetic	
Oil Capacity (oz./liters)	3.5/0.1	
Plungers	Stainless Steel	
Manifold	Aluminum	
Valves	Plastic	
Unloader	Preset	
Detergent Injector	Low pressure down stream from pump	
Unit Net Weight (lbs/Kg)	54/24.5	62/28
Unit Shipping Weight (lbs/Kg)	65/29.5	74/33.5
Unit Net Dimension (in/cm)	18.75Lx18Wx22H/ 47.7Lx45.7Wx55.9H	
Unit Shipping Dimension (in/cm)	23Lx17.75Wx22H/ 58.4Lx45.1Wx55.9H	

---

**NOTES**

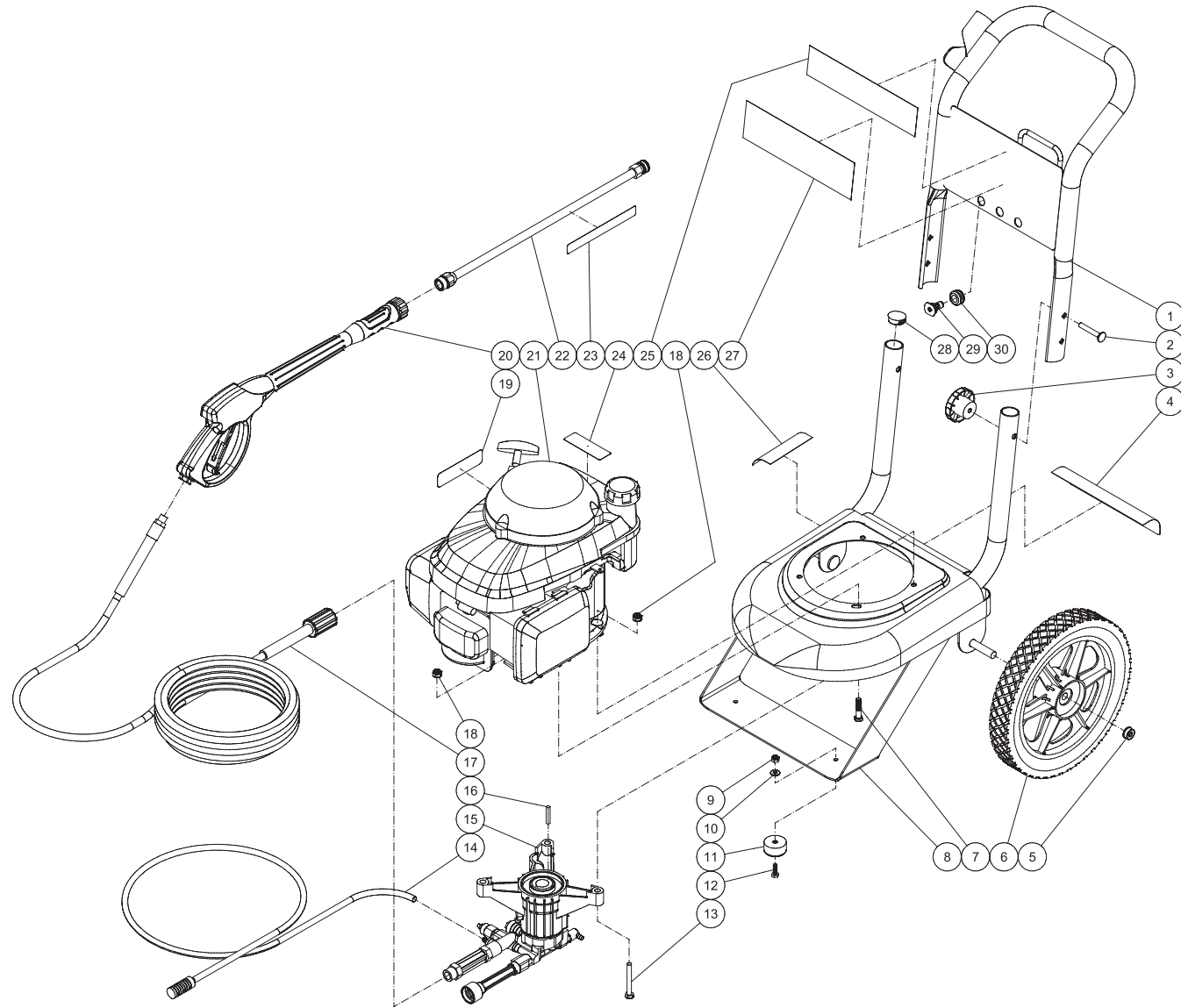
---

<b>DATE</b>	<b>SERIAL #</b>	<b>REASON</b>
09-05-14	10812035	CHANGED PUMP FROM 3-0290 TO 3-0358
04-02-15	N/A	ADDED UNIT HR-2600GM

---

**NOTES**

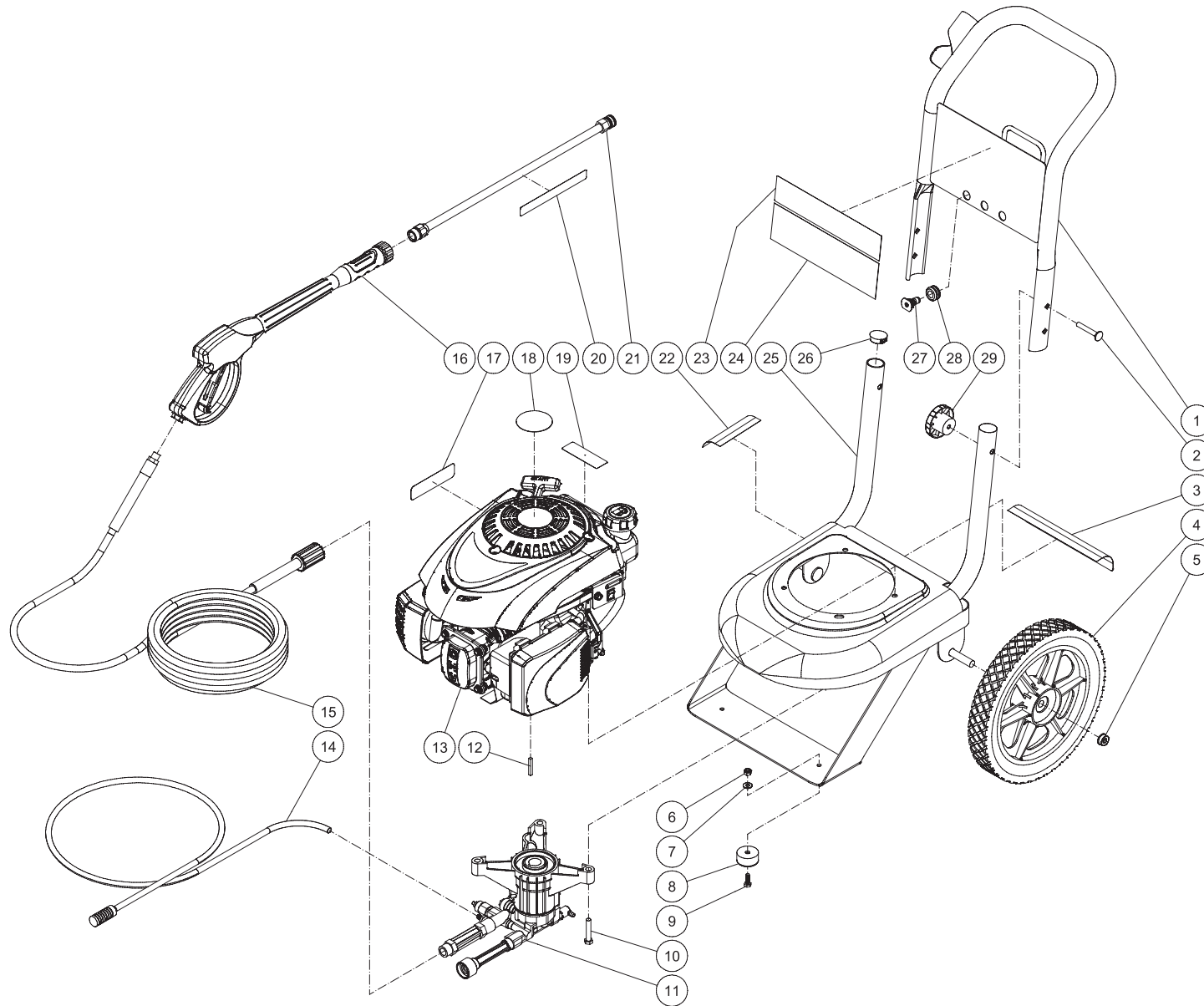
HR-2410GH (AFTER SERIAL #10812035)



CV-2400-4JHC 062816 JTW

FRAME ASSEMBLY			
ITEM	DESCRIPTION	PART #	QTY
1	HANDLE	7-0222A51	1
2	BOLT	31-0051	2
3	KNOB	7-0261	2
4	DECAL- WARNING/CAUTION/OPERATION (F) (SEE 71-0146)	N/A	1
5	HUB CAP	33-0055	2
6	WHEEL	14-0112	2
7	BOLT	27-0069	1
8	BASE ASSEMBLY	5-0270A51	1
9	LOCKNUT	30-0155	2
10	WASHER	28-0002	2
11	ISOLATOR	14-0069	2
12	BOLT	27-0015	2
13	BOLT	27-0073	3
14	DETERGENT HOSE	19-0233	1
15	PUMP	3-0358	1
16	KEY	43-0072	1
17	HOSE	15-0350	1
18	LOCKNUT	30-0157	4
19	DECAL - WARNING RISK OF BURNS (SEE 71-0146)	N/A	1
20	GUN & WAND	16-0442	1
21	ENGINE - HONDA	1-0195	1
22	LANCE ASSEMBLY	16-0366	1
23	DECAL - WARNING RISK OF INJEC (SEE 71-0146)	N/A	1
24	DECAL-CAUTION RISK OF FIRE (SEE 71-0146)	N/A	1
25	DECAL - HR2410GH	34-1898	1
26	DECAL - SILVER STICKER	N/A	1
27	DECAL- WARNING/CAUTION/OPERATION (E) (SEE 71-0146)	N/A	1
28	PLUG	62-0200	2
29	NOZZLE - 15°	18-0426	1
-	NOZZLE - 25°	18-0427	1
-	NOZZLE 65° DETERGENT	18-0386	1
30	GROMMET	33-0001	3
-	DECAL SET	71-0146	1

# HR-2600GM



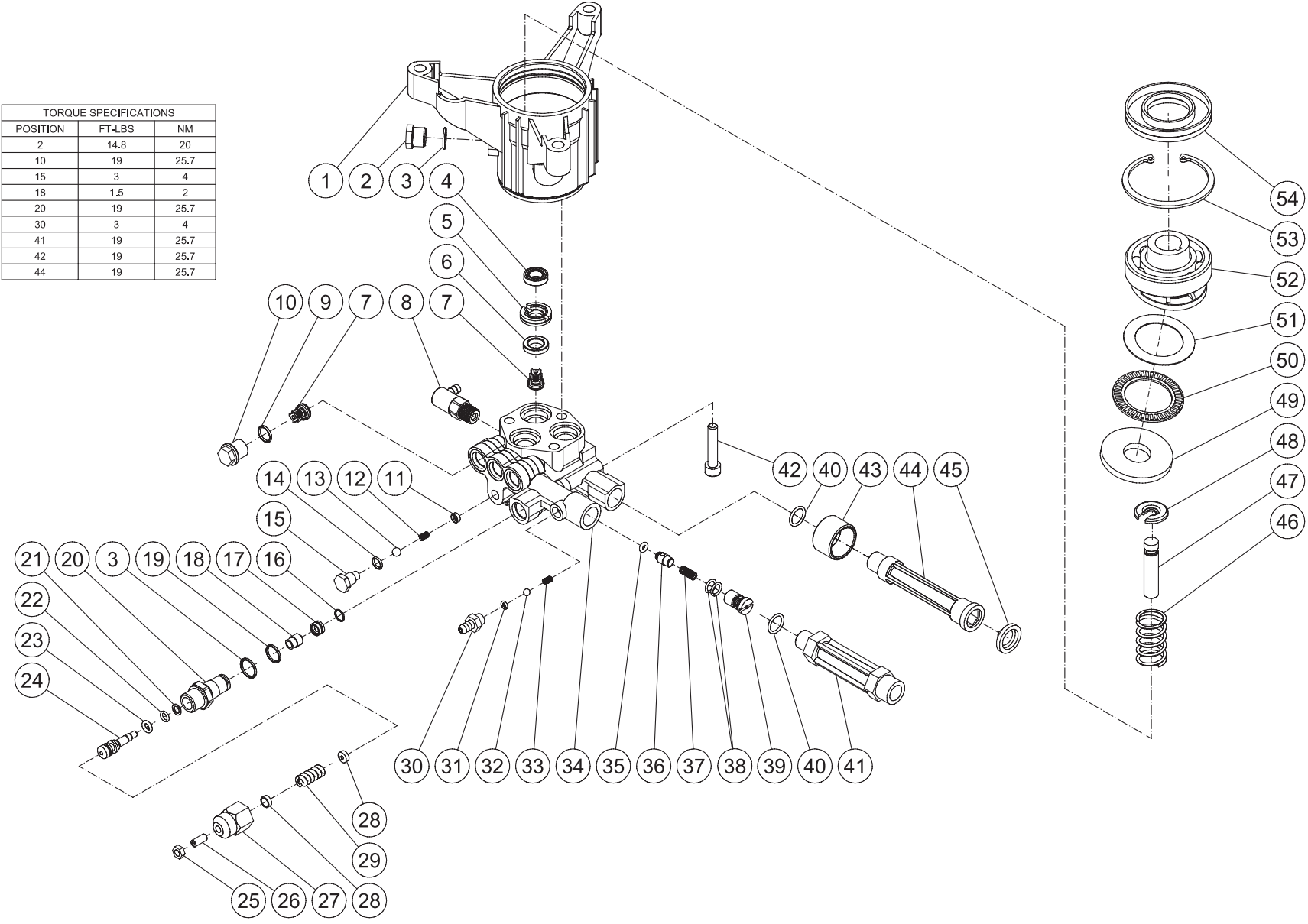
CV-2600-0JMC 062716 JDK



FRAME ASSEMBLY			
ITEM	DESCRIPTION	PART #	QTY
1	HANDLE	7-0222A51	1
2	BOLT	31-0051	2
3	DECAL- WARNING/CAUTION/OPERATION (F) (SEE 71-0146)	N/A	1
4	WHEEL	14-0112	2
5	HUB CAP	33-0055	2
6	LOCKNUT	30-0155	2
7	WASHER	28-0002	2
8	ISOLATOR	14-0069	2
9	BOLT	27-0015	2
10	BOLT	27-9602	3
11	PUMP	3-0358	1
12	KEY	43-0072	1
13	ENGINE	1-0222	1
14	DETERGENT HOSE	19-0233	1
15	HOSE	15-0350	1
16	GUN & WAND	16-0442	1
17	DECAL - WARNING RISK OF BURNS (SEE 71-0146)	N/A	1
18	DECAL - MI-T-M 170CC SERIES	34-2455	1
19	DECAL-CAUTION RISK OF FIRE (SEE 71-0146)	N/A	1
20	DECAL - WARNING RISK OF INJEC (SEE 71-0146)	N/A	1
21	LANCE ASSEMBLY	16-0366	1
22	DECAL - SILVER STICKER	N/A	1
23	DECAL	34-3269	1
24	DECAL- WARNING/CAUTION/OPERATION (E) (SEE 71-0146)	N/A	1
25	BASE ASSEMBLY	5-0270A51	1
26	PLUG	62-0200	2
27	NOZZLE - 15°	18-0426	1
-	NOZZLE - 25°	18-0427	1
-	NOZZLE 65° DETERGENT	18-0386	1
28	GROMMET	33-0001	3
29	KNOB	7-0261	2
-	DECAL SET	71-0146	1

# PUMP ASSEMBLY (3-0358)

TORQUE SPECIFICATIONS		
POSITION	FT-LBS	NM
2	14.8	20
10	19	25.7
15	3	4
18	1.5	2
20	19	25.7
30	3	4
41	19	25.7
42	19	25.7
44	19	25.7



3-0358 072015 JDK

PUMP ASSEMBLY							
ITEM	DESCRIPTION	PART #	QTY	ITEM	DESCRIPTION	PART #	QTY
1	CRANKCASE	46-1605	1	28	SPRING BUTTON	8-0501	2
2	PLUG	39-0102	1	29	SPRING	49-0157	1
3	O-RING	25-0510	2	30	HOSE BARB	SEE KIT	1
4	OIL SEAL (SEE KIT 70-0411)	SEE KIT	3	31	O-RING	25-0371	1
5	PACKING RETAINER	46-1177	3	32	BALL	8-0521	1
6	WATER SEAL	46-1259	3	33	SPRING	8-0520	1
7	VALVE COMPLETE	SEE KIT	6	34	PUMP HEAD	46-1420	1
8	THERMAL RELIEF VALVE	22-0408	1	35	O-RING	25-0406	1
9	O-RING	25-0673	3	36	VALVE	46-1422	1
10	VALVE CAP	39-0253	3	37	SPRING	49-0124	1
11	SEAT	SEE KIT	1	38	O-RING	25-0343	2
12	SPRING	46-1598	1	39	INJECTOR	46-1423	1
13	BALL	46-1599	1	40	O-RING	25-0536	2
14	O-RING	25-0415	1	41	OUTLET	46-1424	1
15	GRUB SCREW	27-9599	1	42	BOLT	27-9590	3
16	O-RING	25-0500	1	43	FITTING	46-1178	1
17	SEAT	8-0570	1	44	INLET	46-1421	1
18	POPPET	8-0569	1	45	FILTER	19-0001	1
19	O-RING	25-0387	1	46	SPRING	49-0160	3
20	PISTON GUIDE	8-0566	1	47	PISTON (SEE KIT 70-0410)	SEE KIT	3
21	O-RING	25-0589	1	48	SPRING RETAINER	46-1183	3
22	O-RING	SEE KIT	1	49	THRUST WASHER	46-0876	1
23	O-RING	25-0526	1	50	BEARING	48-0057	1
24	PISTON	8-0565	1	51	THRUST WASHER	48-0056	1
25	NUT	30-6024	1	52	WOBBLE PLATE	46-1621	1
26	SET SCREW	27-9587	1	53	SNAP RING	46-1185	1
27	ADJUSTMENT BARREL	8-0564	1	54	OIL SEAL	26-0290	1

REPLACEMENT KITS				
KIT #	DESCRIPTION	ITEMS	# OF ASSEMBLIES	#OF CYLINDERS
70-0410	KIT - PISTONS	47	3	3
70-0411	KIT - OIL SEALS	4, 54	3, 1	-
70-0413	KIT - O-RINGS	22-23, 3, 19, 18, 31, 35, 38, 40, 14	1, 2, 1, 1, 1, 1, 2, 2, 1	-
70-0446	KIT - UNLOADER	25-27, 28, 16-24, 29, 3	1, 2, 1, 1, 1	-
70-0464	KIT - WATER SEALS	6	3	3
70-0556	KIT - VALVES	7	6	3
70-0560	KIT - SHUTTER VALVE	35-37, 38, 39	1, 2, 1	-
70-0627	KIT - CHEMICAL INJECTOR	30-33	1	-
70-0656	KIT - EZ START	11-15	1	-

